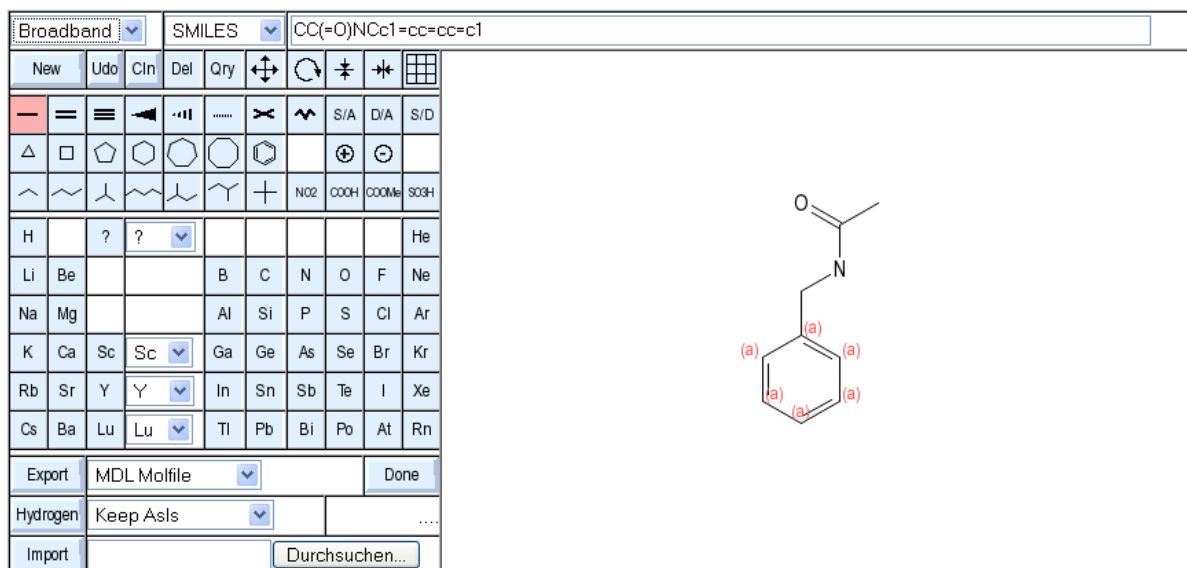
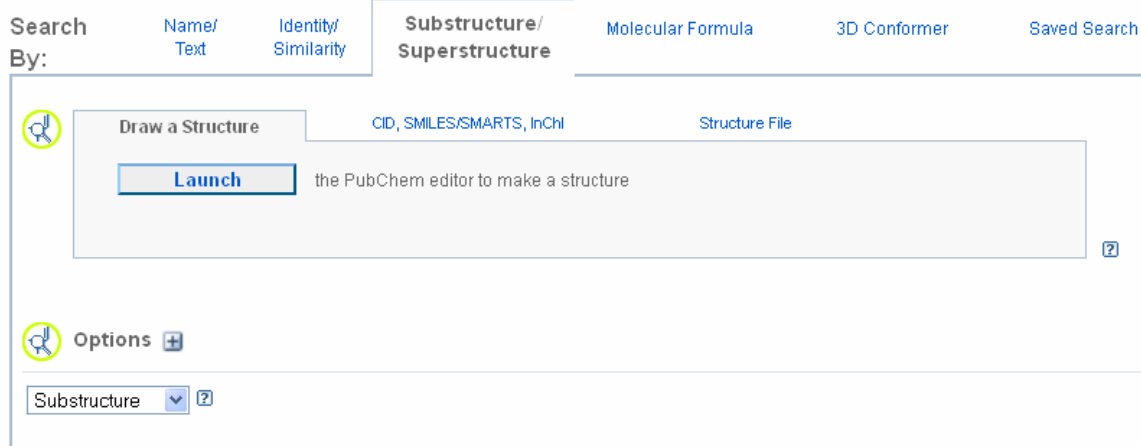
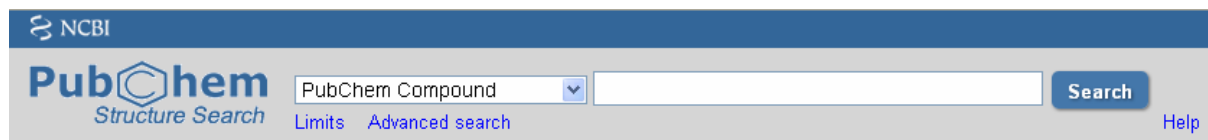


Hands-on exercises to the lecture „Modern Methods in Drug Discovery“ WS19/20

The Chemical Structure Search option of the PubChem database allows you to depict your SMILES and SMARTS using the Sketch button that opens a separate window:

<https://pubchem.ncbi.nlm.nih.gov/search/search.cgi>

menu item: Substructure/Superstructure , Launch the PubChem editor



Try to find correct SMILES for the following structures:

Tip: Type your SMILES in a text editor program first and then copy/paste them into the PubChem editor

